

## Sonova UC version 1.1 (released 2016-05-16)

This document describes the *manual* installation of the font and supporting technologies. It is highly recommended that you use the installation program for the *Aural Sonology plug-in* for the *Acousmographie*, all the following steps should then be handled automatically.

### About

Sonova is a UNICODE font and can only be used in applications supporting this modern format (includes Microsoft Word 2004, Adobe CS3 and Finale 2012). It contains a large number of signs, intended for the different types of analysis and description methods developed in Aural Sonology. Apart from that it also contains the roman letters, phonetic symbols and a large number of other alphabets.

*Please note that this font is intended for use by experienced computer users. Installing and using this font is not a trivial matter. See disclaimer at the end of this document.*

### Installation

- On Windows 7, double-click the "SonovaUC.ttf" to start the installation process.
- On Windows XP or earlier, open the Control Panel from the Start Menu

#### If in Category View, choose

Appearance and Themes  
See Also > Fonts (the column at the left side of the window)  
File/Install New Font...  
**(You can also just drop the font file in the "Fonts" window)**

#### ...or if in Classic View

open "Fonts"  
From the menu choose File/Install New Font...  
**(You can also just drop the font file in the "Fonts" window)**

### Usage

The symbols are assembled with basic components, which has to be combined to make a full symbol, e.g. 7 characters and 3 spaces are used to make a "vacillating" sound-object in the Sonova font.

The characters dedicated to Aural Sonology (including Spectromorphological notation) are located in the "Private Use Area" between E000 to E500. To access this block the built in "Character Map" can be used. A more effective way to work is to use an input method that translates keystrokes to the desired Unicode character in a logical way. This is done with Keyboard Layouts. See next section for details on how to install and use these.

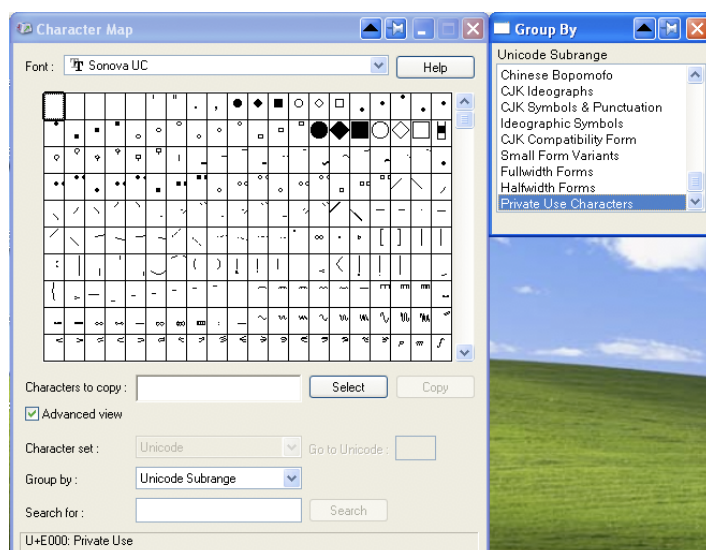
#### Open Character Map:

Start/Accessories/System  
Tools/Character Map

#### To access Unicode characters in Character Map:

Check "Advanced View"  
Choose "Character set: Unicode"  
Group by: Unicode Subrange  
Choose "Private Use Characters"

Select the desired symbol by double clicking and copying or dragging it into your document. If the symbol looks something like an empty rectangle, you have to change the current font in your document to "Sonova UC" for it to display correctly.



## Installing Keyboard Layouts

Keyboard Layouts change the way the system interprets key strokes, it translates between physical keys to actual letters. Included in this release are 4 sets of layouts, each with a systematic layout of the most used characters of each analysis method (Spectromorphological, layers, form-building functions, dynamic form and time-fields). Each has to be installed separately.

*To start the installation process for the spectromorphological signs, run:*

KeyLayouts for PC/Spectrom/Setup.exe

*Follow the same procedure with the other 3 types by running:*

KeyLayouts for PC/Form/Setup.exe

KeyLayouts for PC/Fields/Setup.exe

KeyLayouts for PC/Layers/Setup.exe

To complete the installation process, you should log out or restart the computer.

## Activating a Keyboard Layout

Right-click the Taskbar, select Toolbars>Language bar

In the Taskbar an icon with two letters (e.g. EN) should now have appeared. Right-clicking it should show a menu. Select "Restore the Language Bar".

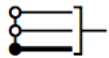
A floating menu now appears. From this menu select "English (United States)", then from the menu to the right select "Sonova SpectroMorph". Make sure that this setting is selected when you open your word processor, it can sometimes switch automatically.

The layout of the symbols can be seen in the document "Sonova UC KeyMaps PC.pdf".

### Example:

Open a text editor and set the font to "Sonova UC". Select the "Sonova SpectroMorph" Keyboard Layout from the "Language Bar". Then press w,e,r,W,E,R,space,space,space,]- (This example is for English Keyboards).

The result should be this symbol (a vacillating sound object):



Remember to switch back to your own language's Keyboard Layout when you are done!

## Contact

If you encounter problems with installing the font or have suggestions on how to make this installation guide easier to follow, please contact: [info@spectromusic.com](mailto:info@spectromusic.com)

## Disclaimer

THE FONT SOFTWARE IS PROVIDED "AS IS", WITHOUT WARRANTY OF ANY KIND, EXPRESS OR IMPLIED, INCLUDING BUT NOT LIMITED TO ANY WARRANTIES OF MERCHANTABILITY, FITNESS FOR A PARTICULAR PURPOSE AND NONINFRINGEMENT OF COPYRIGHT, PATENT, TRADEMARK, OR OTHER RIGHT. IN NO EVENT SHALL THE COPYRIGHT HOLDER BE LIABLE FOR ANY CLAIM, DAMAGES OR OTHER LIABILITY, INCLUDING ANY GENERAL, SPECIAL, INDIRECT, INCIDENTAL, OR CONSEQUENTIAL DAMAGES, WHETHER IN AN ACTION OF CONTRACT, TORT OR OTHERWISE, ARISING FROM, OUT OF THE USE OR INABILITY TO USE THE FONT SOFTWARE OR FROM OTHER DEALINGS IN THE FONT SOFTWARE.